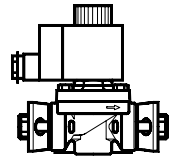
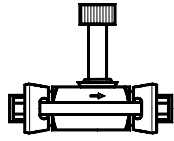


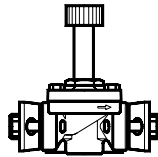
EVRA 3 – 20 EVRAT 10 – 20



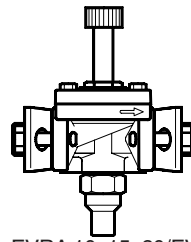
R 717 (NH₃), HFC, HCFC, CFC



EVRA 3



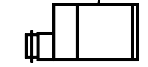
EVRA 10/EVRAT 10



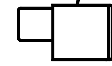
EVRA 10, 15, 20/EVRAT 10, 15, 20



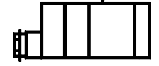
10 W a.c. ~



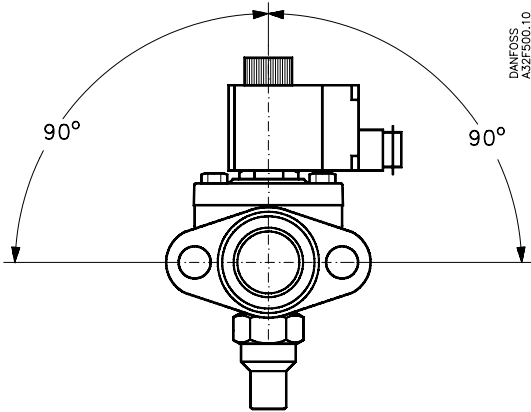
10/12 W a.c. ~



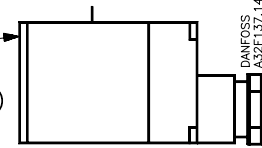
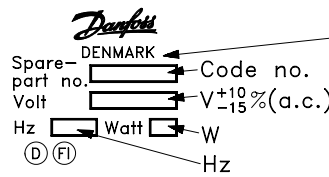
20 W d.c. =



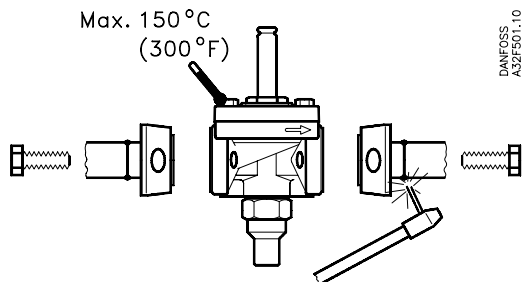
12 W a.c. ~
20 W d.c. =



DANFOSS
A32F500.10



DANFOSS
A32F137.14



DANFOSS
A32F501.10

10 W a.c.



t_{max.} 80°C (175°F)

10/12 W a.c.



t_{max.} 80°C (175°F)

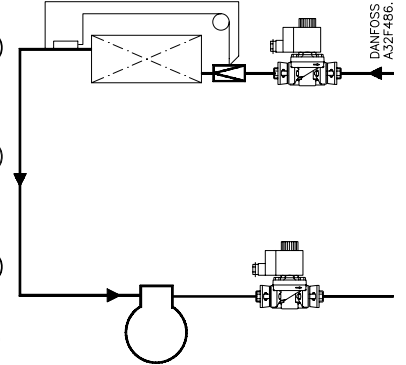
20 W d.c.



t_{max.} 50°C (120°F)

t_{min.} -40°C (-40°F)

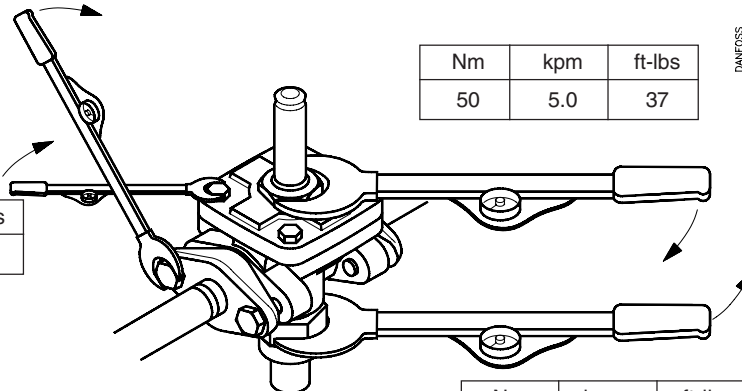
Min. medium temperature: -40°C (-40°F)
 Max. medium temperature: 105°C (220°F)
 Max working pressure: PB 28 Bar / MWP 405 psig
 Max opening diff. pressure (MOPD): →



DANFOSS
A32F486.10

Nm	kpm	ft-lbs
60	6.0	45.0

Nm	kpm	ft-lbs
12	1.2	9

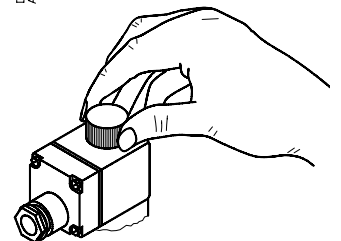


Nm	kpm	ft-lbs
50	5.0	37

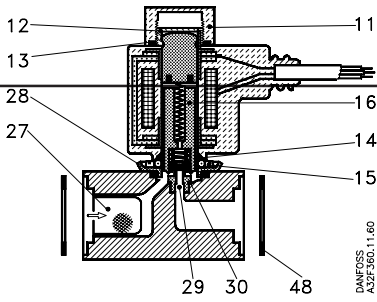
Nm	kpm	ft-lbs
30	3.0	22.5

DANFOSS
A32F488.10

DANFOSS
A32F65.12

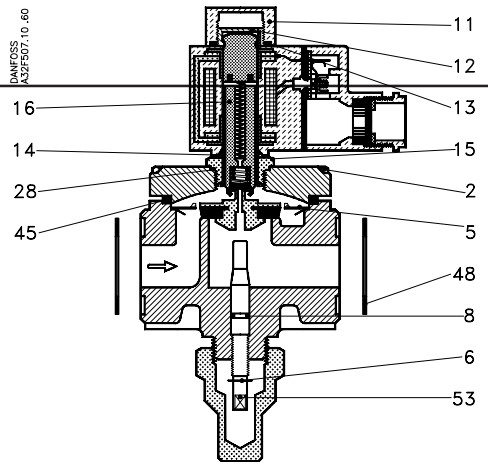


EVRA 3



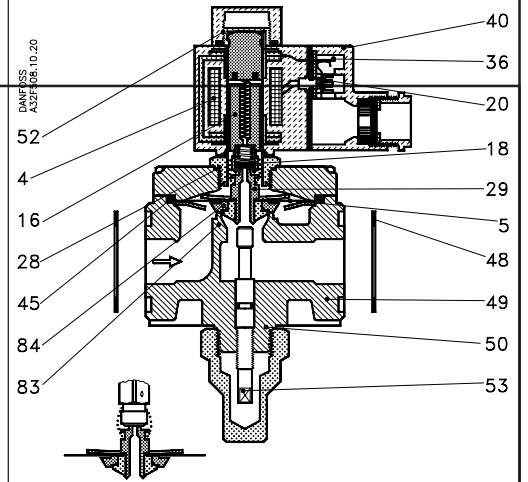
DANFOSS
A32F503.11.60

EVRA 10 - 20



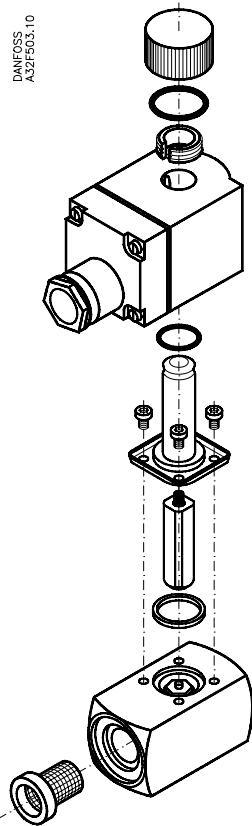
DANFOSS
A32F507.10.60

EVRAT 10 - 20



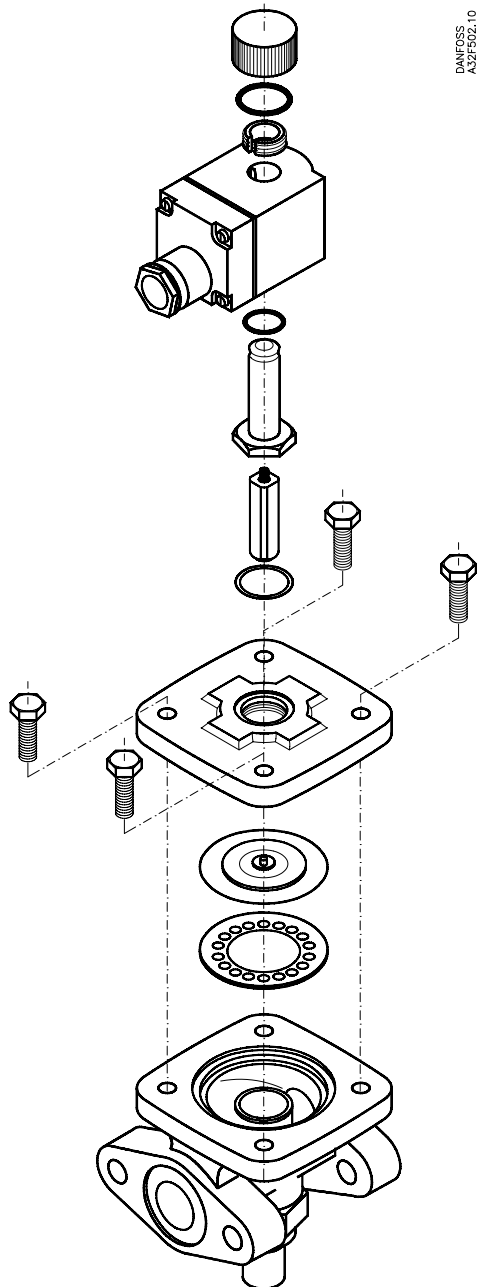
DANFOSS
A32F508.10.20

EVRA 3



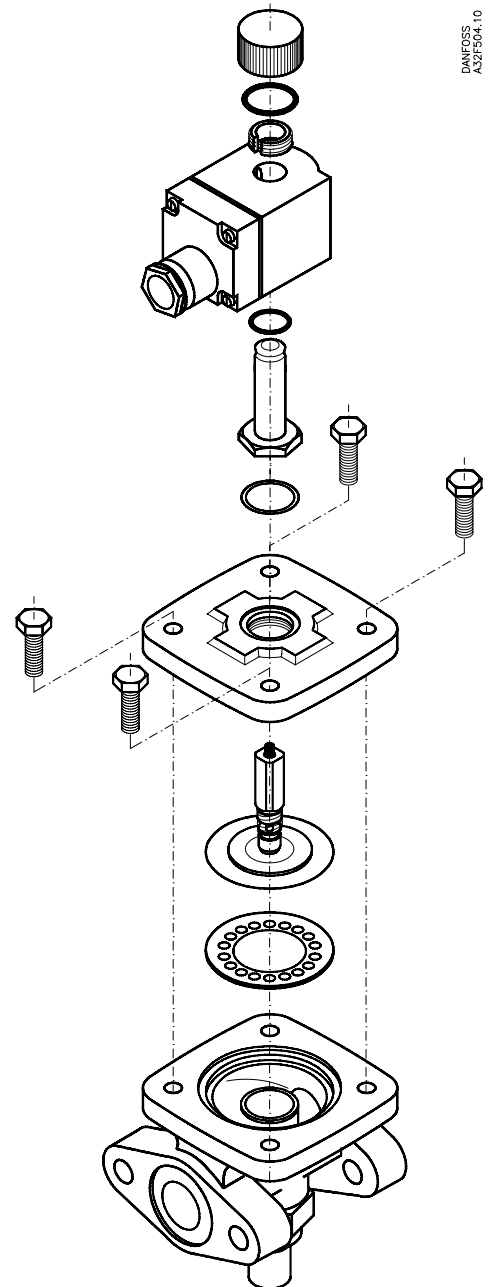
DANFOSS
A32F503.10

EVRA 10 - 20



DANFOSS
A32F502.10

EVRAT 10 - 20



DANFOSS
A32F504.10